

PRELIMINARY
NOT FOR CONSTRUCTION

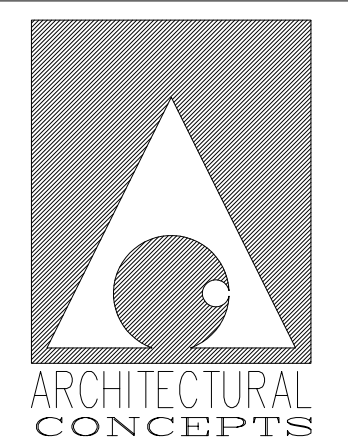
THIS DRAWING AND ALL INFORMATION CONTAINED HEREIN ARE THE SOLE, CONFIDENTIAL AND EXCLUSIVE PROPERTY OF ARCHITECTURAL CONCEPTS. PUBLICATION OF THIS DRAWING IS LIMITED SOLELY TO THE SPECIFIC PROJECT AND/OR SITE NOTED HEREIN. REPRODUCTION, PUBLICATION, REUSE OR MODIFICATION OF THIS DOCUMENT IN WHOLE OR IN PART IS EXPRESSLY PROHIBITED WITHOUT PRIOR WRITTEN CONSENT OF ARCHITECTURAL CONCEPTS.

DATE	REVISION
08-05-2011	FOR CONSTRUCTION

PROPOSED BUILDING FOR:



Caledonia Township, MI.



ARCHITECTURE
PLANNING
ENGINEERING
•
6650 CROSSING DRIVE, S.E.
GRAND RAPIDS, MI 49508
(616) 554-1222
FAX (616) 554-1225

DATE JULY 13, 2011	PROJECT No. 11-12
-----------------------	----------------------

SHEET No. A-1
